

# GROVER HOUSE



## Caldwell | 333 Bloomfield Avenue

Grover House will be an innovative adaptive reuse of a 102-year-old historic bank building in the Central Business District of charming Caldwell, NJ. Located on the main office corridor, it is a short walking distance to over 20 restaurants, shops, galleries, coffeehouses and the bus to NYC.

The conversion of the building will transform over 14,000 square feet of space into retail and professional offices of varying sizes and layouts. The renovation will keep the beautiful architectural bones of the exterior intact and create a splendid conference room for tenants' exclusive use.

The building's common areas will feature a community art gallery and exhibition space for local artists to use on a pro bono basis. This provides a welcoming environment and dynamic entrance for tenants and their visitors, enhances connectivity with the community, and maximizes the use of energy and resources by utilizing space for multiple purposes.

Currently leasing, the building will be ready for occupancy in the 3rd quarter of 2018.

### Interior Design Features

- Customizable open space designed and built to your specifications
- Unique architectural details including stained glass windows, columns, original moldings and exposed brick
- Large windows throughout to bring in abundant natural light
- Soaring ceiling heights
- Sub-metered electrical and HVAC
- Prewired for FiOS and telecom

### Exterior Amenities

- Reserved permit parking in municipal lots
- Downtown location with Bloomfield Avenue amenities
- Architecturally preserved structure: original granite, limestone and slate kept intact and restored

### Common Areas

- ADA compliant elevator and restrooms
- On-site shower and changing room
- Common conference room
- Video security with 24/7 tenant access

### Environmental Commitment

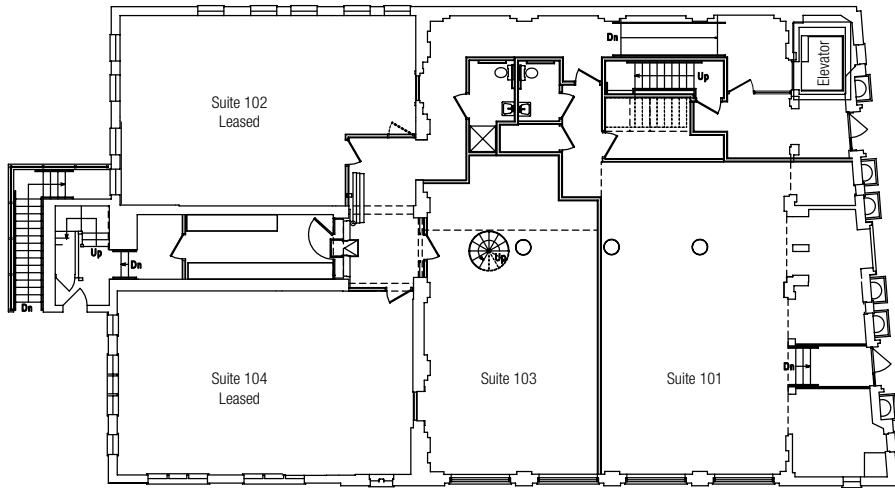
- Pending LEED Certification from the U.S. Green Building Council
- Super efficient HVAC system
- Low or No VOC paints or adhesives
- Environmentally efficient electrical and plumbing fixtures
- Construction waste recycled



[bravitas.com/333bloomfield](http://bravitas.com/333bloomfield)

For more information  
**(973) 783-8700**  
[chrystyna@bravitas.com](mailto:chrystyna@bravitas.com)

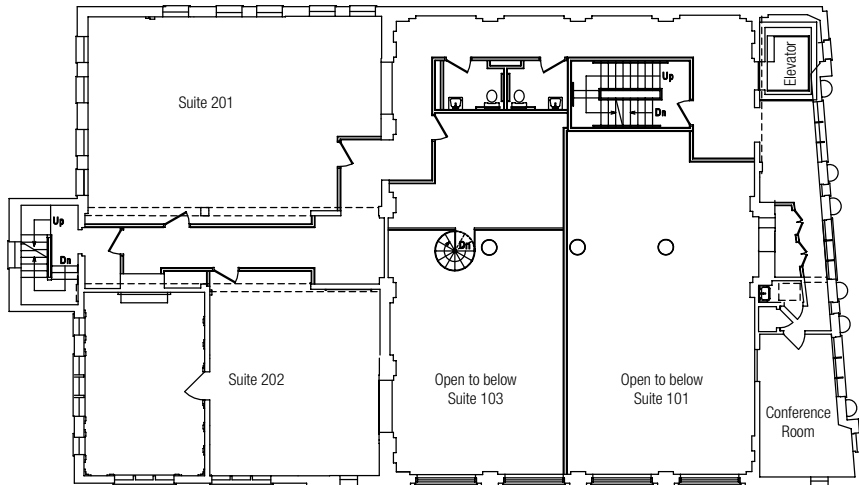
GROVER HOUSE  
First Floor



GROVER HOUSE  
Third Floor



GROVER HOUSE  
Second Floor



GROVER HOUSE  
OUR TEAM



ARCHITECTURE • INTERIORS  
**RHG A+D**

**Sionas Architecture, PC**  
ARCHITECTURE + LANDSCAPE ARCHITECTURE + PLANNING